

IC-PCR1500 IC-R1500 IC-PCR2500 IC-R2500

Firmware update information

Thank you for using the Icom Download Service.

The IC-PCR1500/2500 Ver. 2.10 firmware is now ready to update for the previous Ver. 2.01 or older firmware for IC-PCR1500, IC-R1500, IC-PCR2500 and IC-R2500.

NOTE:

- If your IC-PCR1500, IC-R1500, IC-PCR2500 or IC-R2500's Main unit firmware and control software versions are 2.10 or later, these update are not necessary. (See page 5 for version confirmation details.)
- Please update the Main unit firmware to Ver. 2.10, if you have updated the control software to Ver. 2.10 or vice versa.

For control software operation

- ➔ Windows Vista™ supported (Improved)
- ➔ Frequency coverage extension (Up to 1300 MHz) in P25 mode operation (Improved)
- ➔ AFC function (Improved)

For remote controller operation

- ➔ Frequency coverage extension (Up to 1300 MHz) in P25 mode operation (Improved)
- ➔ AFC function (Improved)

Icom, Icom Inc. and the ICOM logo are registered trademarks of Icom Incorporated (Japan) in the United States, the United Kingdom, Germany, France, Spain, Russia and/or other countries.

Microsoft, Windows and Windows Vista are either registered trademarks or trademarks of Microsoft Corporation in the U.S.A and/or other countries. Screen shots produced with permission from Microsoft Corporation.

All other products or brands are registered trademarks or trademarks of their respective holders.

IMPORTANT!: You undertake the updating of the firmware at your own risk and responsibility.
Refer to the following steps for the correct procedures in updating the firmware.

■ Preparation

◇ Firmware and control software files

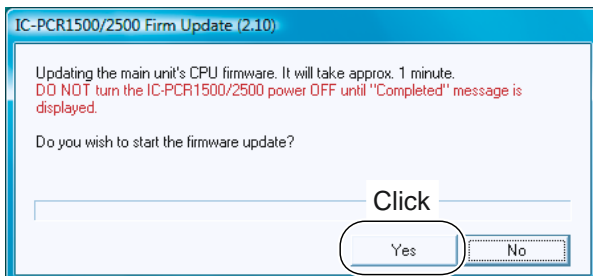
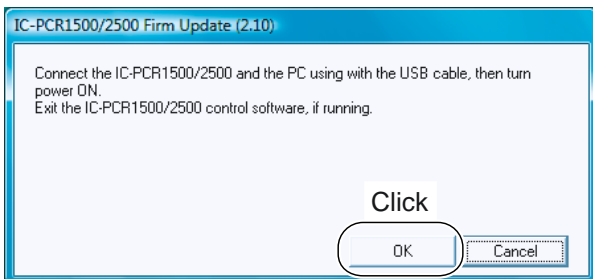
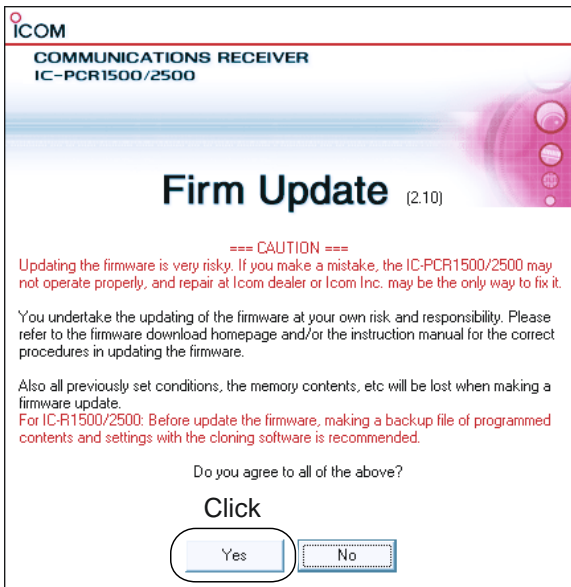
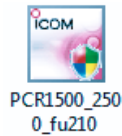
Before updating the firmware and control software, download and expand the following compressed files.

- Control software : CD-287901-008.zip
- Receiver's main unit firmware : Pcr1500_2500_firmup_v210.zip

■ Updating

IMPORTANT!: You undertake the updating of the firmware at your own risk and responsibility. Refer to the following steps for the correct procedures in updating the firmware.

◇ Updating the Main unit firmware



- ① Quit all applications when Windows is running.
- ② Double-click the "PCR1500_2500_fu210.exe" file, contained in "Pcr1500_2500_firmup_v210" folder, to start up the IC-PCR1500/2500 Firmware Update.
 - The window as at left below appears.

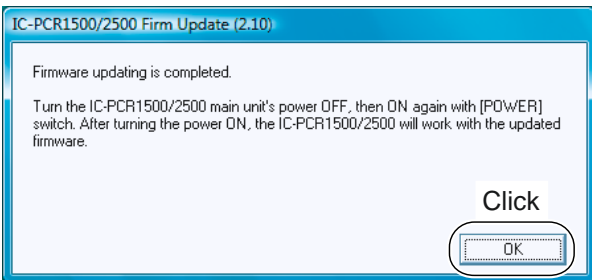
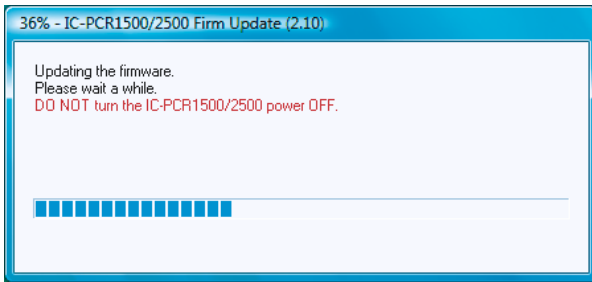
- ③ Read the caution in the window carefully.
- ④ Click [Yes] if you agree and continue the firmware updating.

- ⑤ Connect the Main unit and the PC using the USB cable, and turn the Main unit ON. After that, click [OK].

- ⑥ Click [Yes] to start the firmware update.

☞ Continue to the next page

◇ Updating the Main unit firmware— continued



⑦ During updating, “Updating the firmware” window appears as at left.

⚠ WARNING!: **NEVER** turn the Main unit power OFF at this stage. The IC-PCR1500/2500 firmware will be damaged. If the firmware file is damaged, the receiver unit can only be repaired at Icom service center or authorized technical dealer.

⑧ After the firmware updating, “Firmware updating is completed” window appears as at left. Click [OK].

- When “Firmware updating failed” message appears, turn the Main unit OFF, then ON again and retry the updating procedure from step ①.

⑨ Turn the Main unit power OFF, then ON again.

- The firmware updating is completed. The IC-PCR1500, IC-R1500, IC-PCR2500 or IC-R2500 will work with the updated firmware.

◇ Updating the control software

**Why the previous “preset_e.mch” (or “preset_e2.mch,” “preset_e3.mch”) file is needed?*

All previously set conditions, such as the memory contents, are stored into “preset_e.mch” (or “preset_e2.mch,” “preset_e3.mch”) file, if you have not save the set conditions with a different file name.

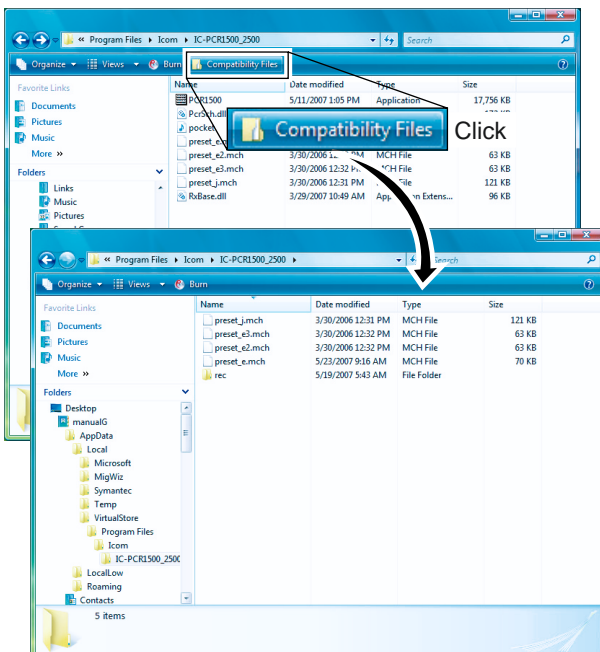
The “preset_e.mch” (or “preset_e2.mch,” “preset_e3.mch”) file (initializing file) will be deleted at the same time when the control software uninstallation is performed—all memory data is lost after the control software updating if the steps ① and/or ⑥ is/are skipped.

DOC folder†:

“Document” folder for Windows Vista™ user, or
“My Document” folder for except Windows Vista™ user

- ① Move or make a backup of the preset file, “preset_e.mch*” (or “preset_e2.mch*,” “preset_e3.mch*”), stored in the IC-PCR1500_2500 (or IC-PCR1500) folder into the desired location any other than DOC folder.† (See the preset file location for Windows Vista™ user at this page’s bottom.)
- ② Uninstall the current IC-PCR1500_2500 (or IC-PCR1500) program.
 - For Windows Vista™ user:
See page 7 for uninstallation details.
 - For except Windows Vista™ user:
See the IC-PCR1500/IC-PCR2500 instruction manual for uninstallation details. (Sec. 3; ■ Uninstallation)
- ③ Double click “Setup.exe” file in “Pcr1500_2500” folder.
 - “Pcr1500_2500” folder is contained in “CD-287901-008” folder.
- ④ Install the updated control software.
 - For Windows Vista™ user:
See page 6 for uninstallation details.
 - For except Windows Vista™ user:
See the IC-PCR1500/IC-PCR2500 instruction manual for installation details. (Sec. 3; ■ Installation)
- ⑤ Start up “IC-PCR1500_2500” program, then quit the program.
 - “IC-PCR1500_2500” folder appears in DOC folder.†
Then preset files are also copied into “IC-PCR1500_2500” folder in DOC folder† automatically.
- ⑥ Move or copy the preset file, “preset_e.mch*” (or “preset_e2.mch*,” “preset_e3.mch*”), that is moved or backup in step ① into “IC-PCR1500_2500” folder (in DOC folder†).
- ⑦ Start up “IC-PCR1500_2500” program.
- ⑧ Open memory list screen.
- ⑨ Open the “preset_e.mch*” (or “preset_e2.mch*,” “preset_e3.mch*”) file in DOC folder† from the file menu.

◇ Location of the preset file for Windows Vista™ user

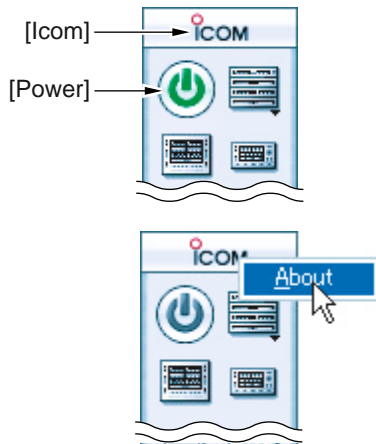


- ① Open the preset file folder via “Computer” or “Windows Explorer.”
 - Default (C:\Program Files\Icom\IC-PCR1500_2500)
- ② If [Compatibility Files] switch appears on the Windows Explorer, click [Compatibility Files] switch. (If [Compatible Files] switch does not appear, skip this step ②.)
 - Overwritten preset file or any other saved data appear.
- ③ Move or make a backup of the preset file, “preset_e.mch*” (or “preset_e2.mch*,” “preset_e3.mch*”), stored in the IC-PCR1500_2500 (or IC-PCR1500) folder into the desired location any other than DOC folder.†

◆ Main unit firmware and control software version confirmation

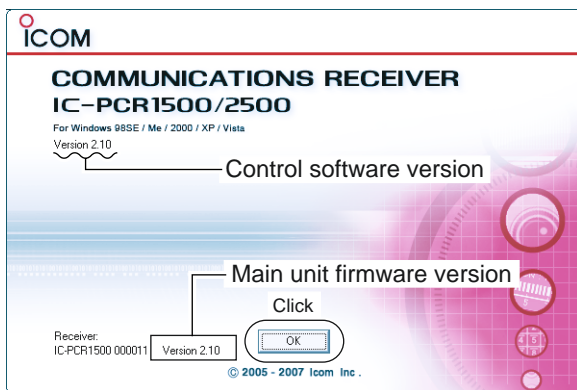
The firmware version of IC-PCR1500, IC-R1500, IC-PCR2500 or IC-R2500's Main unit and control software can be confirmed with the following instructions.

- ① Before launching the program, make sure the Main unit is powered ON.
 - The power indicator lights green.
- ② Launch the "IC-PCR1500_2500" program.
- ③ Click the [Power] icon on the tool bar to connect the control software and Main unit.



- ④ Right-click the [Icom] logo, then click [About].

<Example>



- ⑤ Confirm the Main unit firmware and control software version with the displayed screen as at left.
 - "Version 2.10" is displayed for each indication if the updating is succeeded.

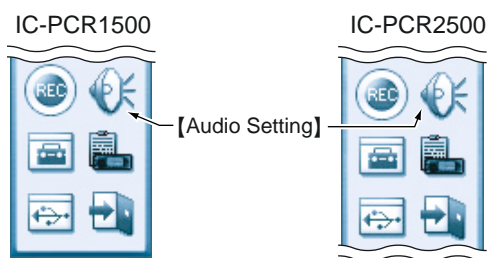
NOTE: When the IC-PCR1500/2500 control software version is 1.00 or 1.01, the Main unit version information is not displayed.

- ⑥ Click [OK].

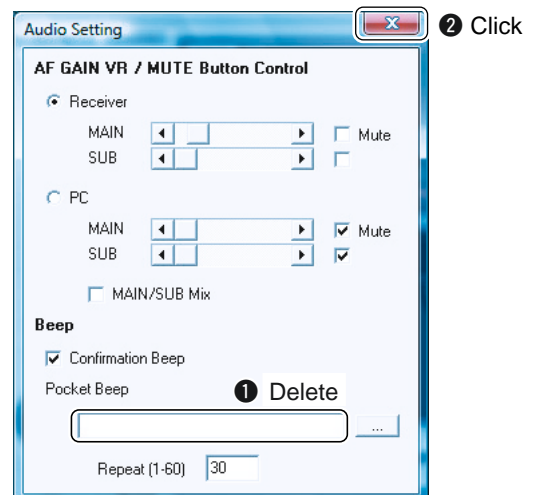
◆ New feature

If you cannot find out the default data for pocket beep, follow the below instructions.

- ① Click the [Audio Setting] icon on the tool bar to call up the Audio Setting screen.



- The Audio setting screen appears as shown at right.
- ② Delete the wave file name in the "Pocket Beep," then close the Audio setting screen.
 - The pocket beep audio returns to default setting.



■ Installation/Uninstallation for Microsoft® Windows Vista™

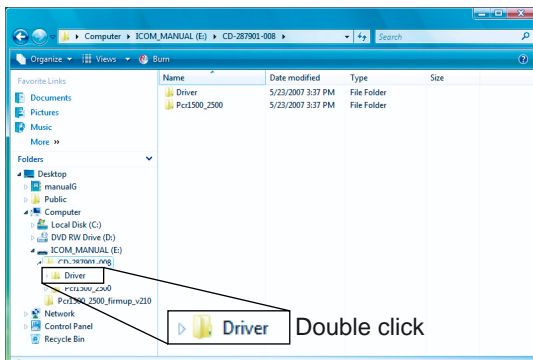
IMPORTANT! (for Driver installation):

- **NEVER** connect the receiver's Main unit until the USB driver installation is completed.
- For the customer who already has installed the supplied USB driver with CD, this USB driver update is not necessary. The performance does not change between the updating or not. If you would like to update USB driver, uninstall the existing USB driver first. See page 7 for uninstallation details.

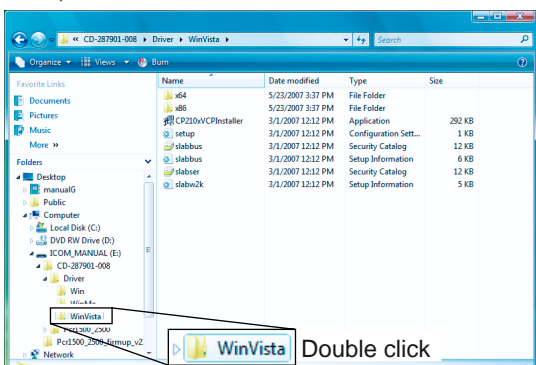
◆ Driver installation

The displayed dialog boxes or indications may differ slightly from the following instructions according to your system conditions, or environment.

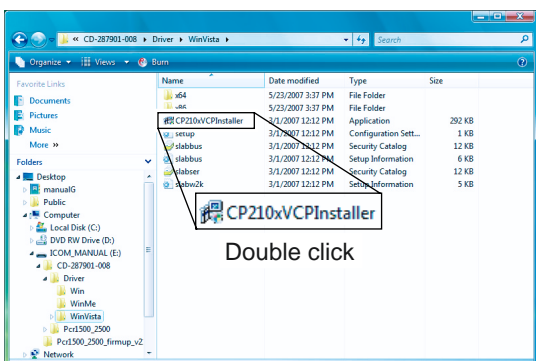
- ① Verify the receiver's Main unit is disconnected from the PC's USB port.
- ② Quit all applications when Windows is running.
- ③ Double click "Driver" folder in "CD-287901-008" folder.



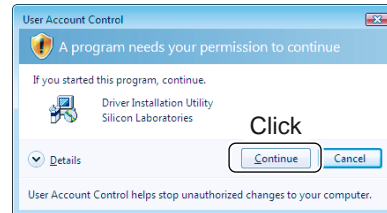
- ④ Double click "WinVista" folder in "Driver" folder.
 - "Win," "WinMe" and "WinVista" folders are included.



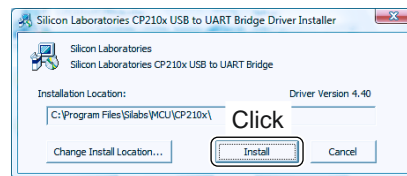
- ⑤ Double click "CP210xVCPInstaller.exe" file in "WinVista" folder.



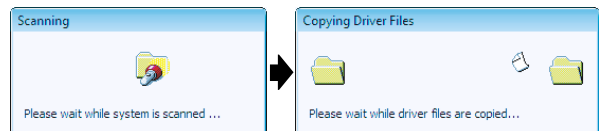
- ⑥ "A program needs your permission to continue" dialog box appears as below. Click [Continue] to start the installation.



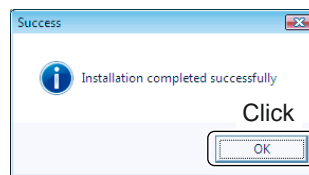
- ⑦ Verify the installation location, then click [Install].



- ⑧ Windows starts scanning for the system, then starts installing the USB driver.



- ⑨ After the installation is completed, click [OK].

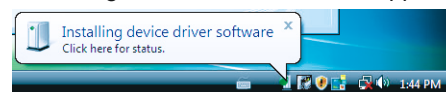


- Restarting the PC is recommended.

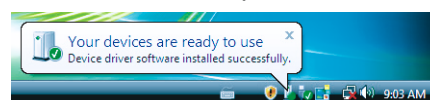
- ⑩ Connect the receiver's Main unit to the desired USB port with the supplied USB cable.

- ⑪ Turn the receiver's Main unit power ON.

- The power indicator lights.
- "Installing device driver software" appears as below.



- ⑫ After the dialog appears as below, USB driver installation has been completed.



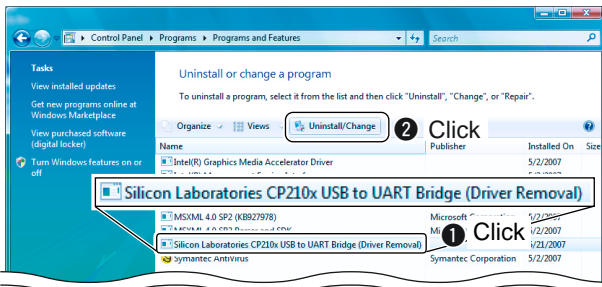
◆ Driver uninstallation

/// The displayed dialog boxes or indications may differ slightly from the following instructions according to your system conditions, or environment.

- ① Start up Windows.
- ② Select the “Control Panel” in the Start menu.
 - The control panel appears as shown in the next step below.
- ③ Click the “Uninstall a program.”
 - The “Uninstall or change a program” menu appears.



- ④ Click the “Silicon Laboratories CP210x USB to UART Bridge (Driver Removal),*” then click [Uninstall/Change].
 - * Older driver: CP210x USB to UART Bridge Controller,
New driver : Silicon Laboratories CP210x USB to UART Bridge (Driver Removal)

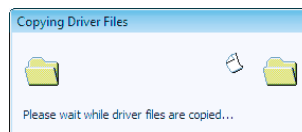


- ⑤ “Windows needs your permission to continue” dialog box appears. Click [Continue].

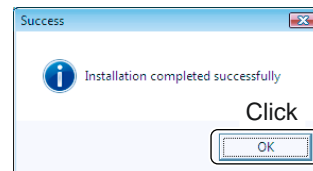
- ⑥ “Silicon Laboratories CP210x USB to UART Bridge Driver Uninstaller” dialog box appears as below. Click [Uninstall] to start the uninstallation.
 - The indication of older driver is different but it is similar as below.



- The uninstallation starts.



- ⑦ After the uninstallation is completed, click [OK].

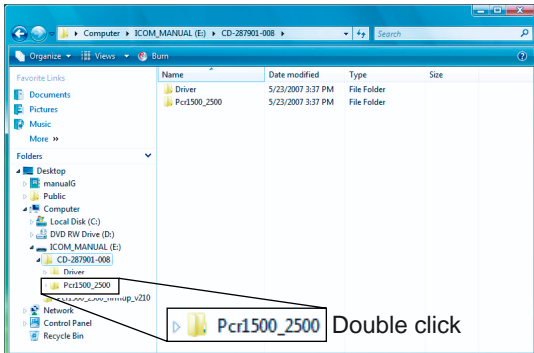


- ⑧ Restarting the PC is recommended.

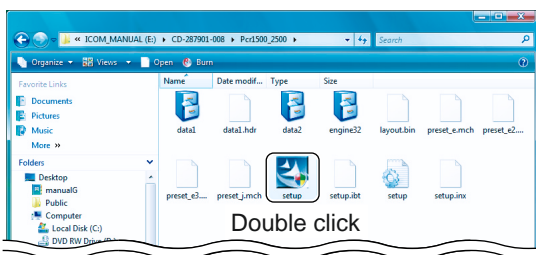
◆ Application installation

/// The displayed dialog boxes or indications may differ slightly from the following instructions according to your system conditions, or environment.

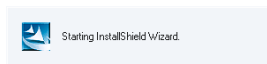
- ① Quit all applications when Windows is running.
- ② Double click “Pcr1500_2500” folder in “CD-287901-008” folder.
 - “Driver” and “Pcr1500_2500” folders are included.



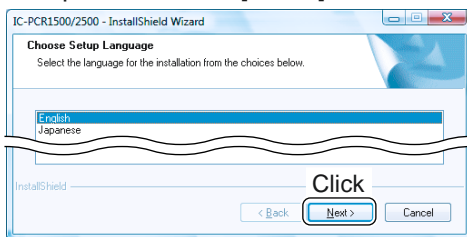
- ③ Double click “Setup.exe” file in “Pcr1500_2500” folder.



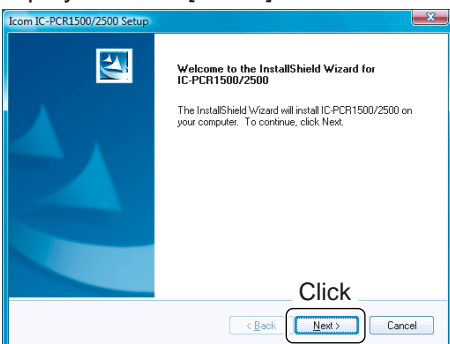
- ④ “A program needs your permission to continue” dialog box appears. Click [Continue].
 - The “InstallShield® Wizard” starts preparing the installation.



- ⑤ Select the desired display language from “English” or “Japanese.” Click [Next>].

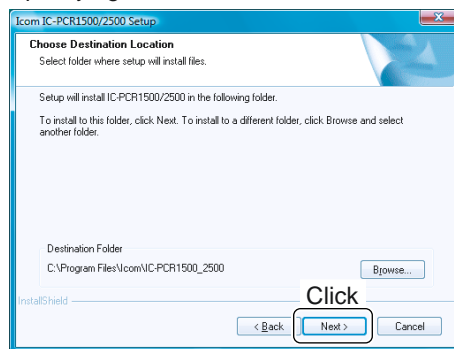


- ⑥ After the preparation, the following dialog box is displayed. Click [Next>].

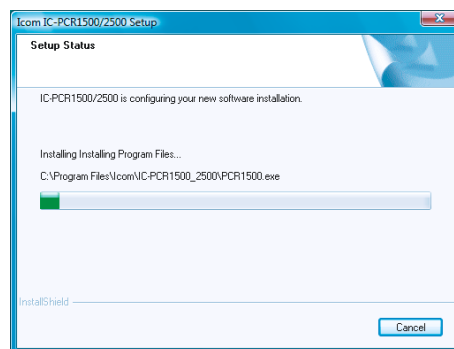


- ⑦ Confirm the installation location, then click [Next>] to start the installation.

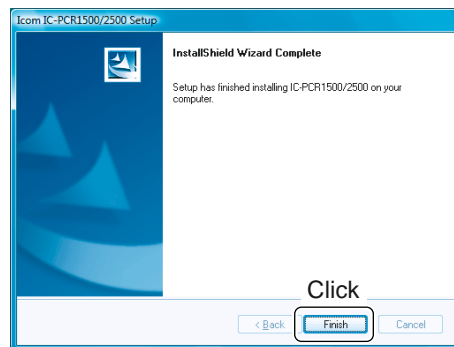
- Click [Browse...] then type the desired location if you specifying the installation location.



- The installation starts.



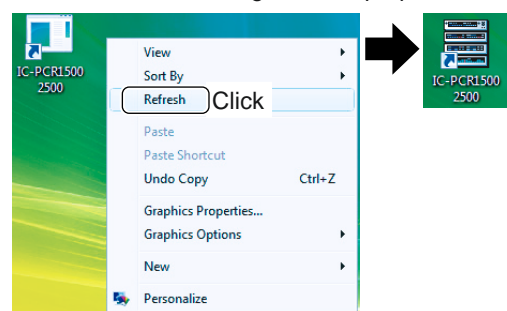
- ⑧ After the installation is completed, click [Finish].



- The IC-PCR1500_2500 shortcut icon is created on the desktop.
- Restarting the PC is recommended.

If the appeared shortcut icon is different from IC-PCR1500_2500, right-click on the desktop, then click [Refresh].

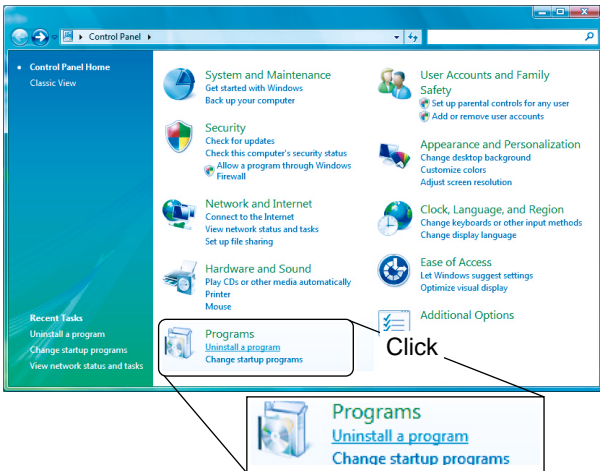
- The shortcut icon changes to the proper icon.



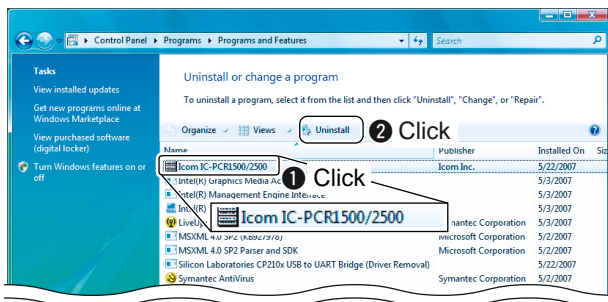
◆ Application uninstallation

/// The displayed dialog boxes or indications may differ slightly from the following instructions according to your system conditions, or environment.

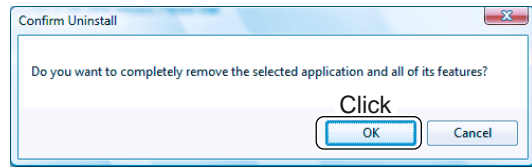
- ① Start up Windows.
- ② Select the “Control Panel” in the Start menu.
 - The control panel appears as shown in the next step below.
- ③ Click the “Uninstall a program.”
 - The “Uninstall or Change a program” menu appears.



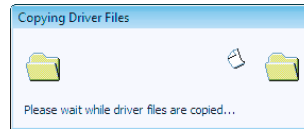
- ④ Click the “Icom IC-PCR1500/2500,” then click [Uninstall].



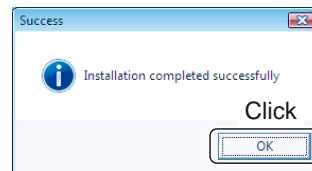
- ⑤ “Windows needs your permission to continue” dialog box appears. Click [Continue].
- ⑥ “Confirm Uninstall” dialog box appears as below. Click [OK] to start the uninstallation.



- The uninstallation starts.



- ⑦ After the uninstall is completed, click [OK].

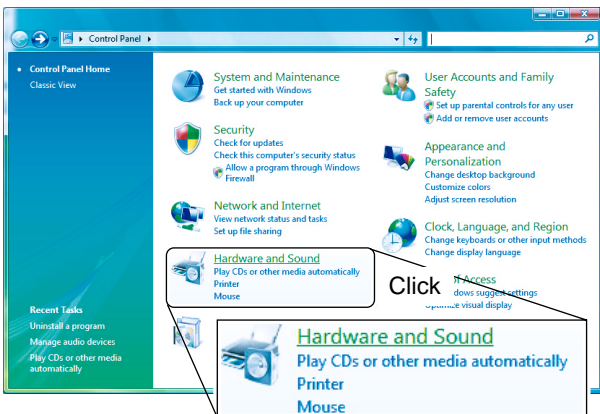


- ⑧ Restarting the PC is recommended.

◆ When playing Sub audio through the computer's speaker (IC-PCR2500 only)

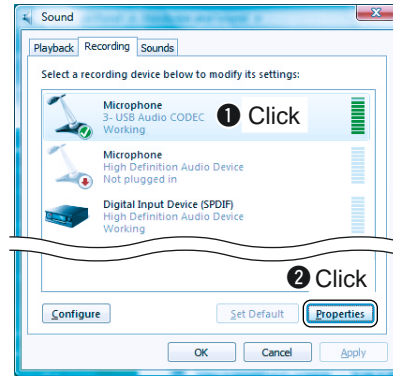
/// The displayed dialog boxes or indications may differ slightly from the following instructions according to your system conditions, or environment.

- ① Start up Windows.
- ② Select the "Control Panel" in the Start menu.
 - The control panel appears as shown in the next step below.
- ③ Click the "Hardware and Sound."
- The "Hardware and Sound" menu appears.



- ④ Click the "Manage audio devices," then click [Recording] tab.

- ⑤ Click "Microphone x*-USB Audio Codec," then click [Properties]. (*: Numeral depending on USB port)



- ⑥ Click "Advance," then change "Default Format" from [1 channel, 16 bit, 44100 Hz (CD Quality)] to [2 channel, 16 bit, 44100 Hz (CD Quality)]. Click [OK].

